

E-Selectin (179-557)

Human, Recombinant, *E. coli*

Cat. No.: RCP9255
 RCP9256
 RCP9118

Size: 10µg
 100µg
 1000µg

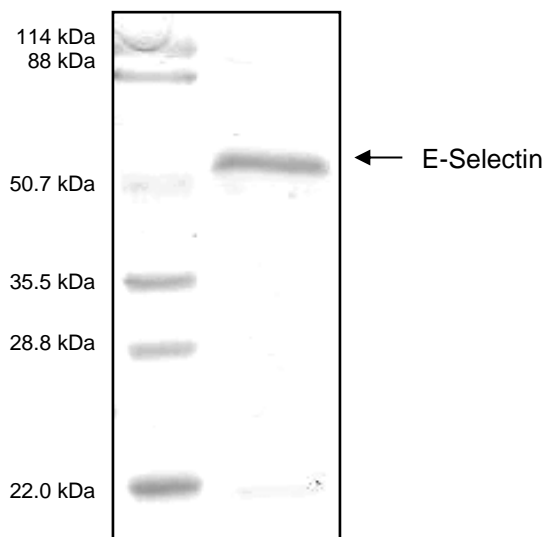
Synonym: Endothelial leukocyte adhesion molecule 1; ELAM1; ELAM

Description: E-selectin belongs to a family of divalent cation-dependent carbohydrate-binding glycoproteins or adhesion molecules. E-selectin is expressed on the surface of endothelial cells and mediates the interaction of leukocytes and platelets with endothelial cells during an inflammatory response.

RANDOX recombinant human E-selectin comprises a 379 amino acid fragment (179-557) corresponding to the cysteine rich complement control region and is expressed in *E. coli* with an amino-terminal hexahistidine tag. This product is for research use only and is not intended for diagnostic or therapeutic use.

Form: Liquid

Purity: >95% by SDS-PAGE



References: Lobb R.R. *et al.* (1991) *J. Immunol.* **147** (1): 124-129.

Li S.H. *et al.*, (1994) *J. Biol. Chem.* **269** (6): 4431-4437.